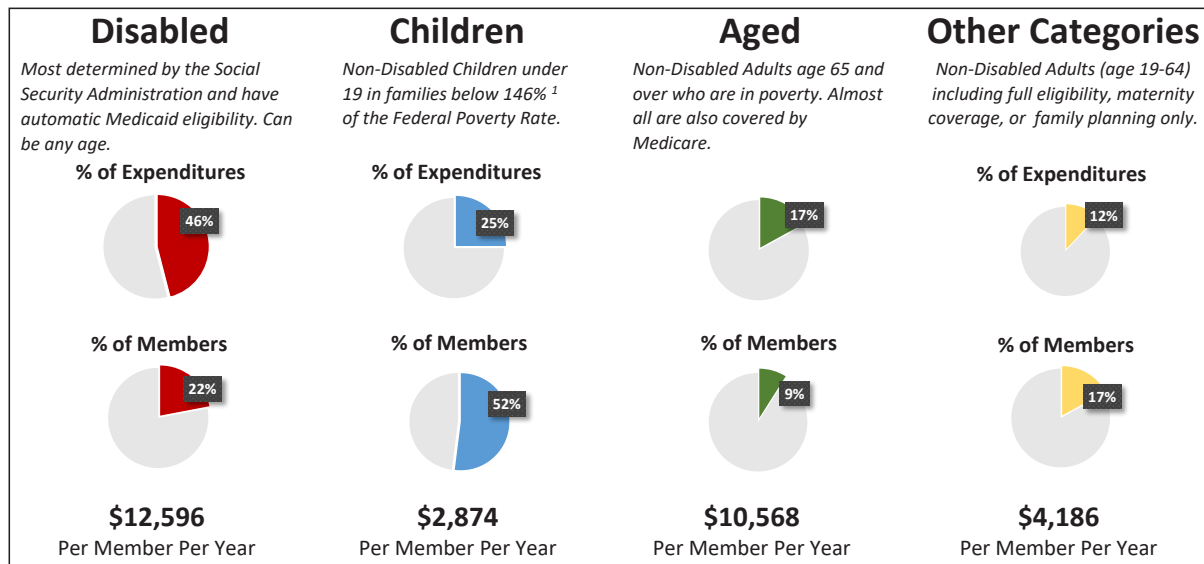


FY 2019

Who Does Alabama Medicaid Serve?



Expenditures, dates of service, include claims, capitations, and access payments based on dates of service in FY 2019.

Per Member Per Year calculations not for the purpose of determining managed care rates and do not align to date paid numbers.

¹The income limit for this group is 141% of the Federal Poverty Level, but in cases of excess income, a Federal Poverty Level disregard of 5% then applies.